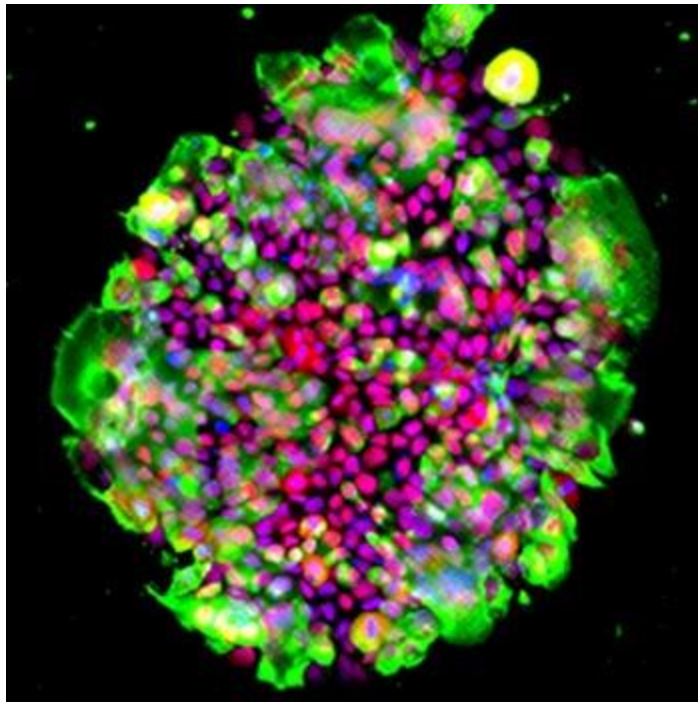


### Laminin isoform kit streamlines cell culture workflow

For researchers looking to optimize protocols for cell culture and differentiation of ES/iPS cells - **AMSBIO** has introduced the **iMatrix Palette**. This **new kit** containing all variants of their iMatrix recombinant laminin E8 fragment isoforms\*\* saving researchers time, cost, and improving reproducibility.



**Image caption:** Streamline protocols for cell culture and differentiation of ES/iPS cells using iMatrix Palette (Courtesy: Kazuo Takayama, CiRA, Kyoto University, Japan).

#### **Culturing human stem cells**

and iPS cells under feed-free conditions requires the use of ECM proteins as an anchor to promote adherence to laboratory plasticware. Unlike traditional laminin-based solutions, iMatrix E8 fragments are just 20% of the full-length laminin with all the integrin binding sites, allowing for better cell adhesion and expansion. The iMatrix series of recombinant laminin isoforms set the benchmark for differentiation of iPSCs into ectoderm, mesoderm, and endoderm.

#### **Containing a vial of each variant,**

iMatrix Palette enables researchers to test and select the optimal laminin E8 variant for their specific cell culture needs, improving experimental accuracy and outcomes. In addition, iMatrix can be used in both pre-mixing and pre-coating protocols.

Designed to streamline your research by providing everything you need in an all-in-one [\[AA1\]](#) kit, using the iMatrix Palette also avoids unnecessary purchases of multiple individual variants thereby ensuring cost-effective experiments.

**The unmatched flexibility**

of the iMatrix Palette kit provides researchers with precise control over cell behavior, enhancing the reproducibility and efficiency of stem cell research and differentiation protocols. For further information please visit <https://www.amsbio.com/imatrix-recombinant-laminin-series/> or contact AMSBIO to discuss your specific research protocols on +31-72-8080244 / +44-1235-828200 / +1-617-945-5033 / [info@amsbio.com](mailto:info@amsbio.com).

**AMS Biotechnology (AMSBIO)**

Founded in 1987, AMS Biotechnology (AMSBIO) is recognized today as a leading transatlantic company contributing to the acceleration of discovery through the provision of cutting-edge life science technology, products, and services for R&D in the medical, nutrition, cosmetics, and energy industries. AMSBIO has in-depth expertise in extracellular matrices to provide elegant solutions for studying cell motility, migration, invasion, and proliferation. This expertise in cell culture and the ECM allows AMSBIO to partner with clients in tailoring cell systems to enhance organoid and spheroid screening outcomes using a variety of 3D culture systems, including organ-on-a-chip microfluidics. For drug discovery research, AMSBIO offers assays, recombinant proteins, and cell lines. Drawing upon a huge and comprehensive biorepository, AMSBIO is widely recognized as a leading provider of high-quality tissue specimens (including custom procurement) from both human and animal tissues. The company provides unique clinical grade products for stem cells and cell therapy applications. This includes GMP cryopreservation technology, and high-quality solutions for viral delivery.

**\*\* The iMatrix Palette kit**

includes iMatrix-511 for maintenance and expansion culture of pluripotent stem cells, iMatrix-411 for induction of differentiation of vascular endothelial cells from ES/iPS cells, iMatrix-221 for purification/maintenance culture of cardiomyocytes/ skeletal muscle cells, iMatrix-332 for induction of differentiation from iPS cells to corneal epithelial cells and iMatrix-111 for induction of differentiation from human iPS cells to hepatoblast-like cells

-----  
**Worldwide HQ**

**AMS Biotechnology (AMSBIO)**

184 Milton Park  
Abingdon  
Oxon OX14 4SE



UK

Tel: +44-1235-828200

Fax: +44-1235-820482

Email: [info@amsbio.com](mailto:info@amsbio.com)

Web [www.amsbio.com](http://www.amsbio.com)