

Dual detector for demanding GPC/SEC applications

The **COMBO-ONE Viscometer/DRI detector** from TESTA Analytical sets a new standard for demanding GPC/SEC applications such as those focused on investigating the structure and branching of polymers.



Image captions: COMBO-ONE Viscometer/DRI dual detector as a standalone unit and as part of a multi detector GPC/SEC system (courtesy: TESTA Analytical).

Viscometry detectors for GPC/SEC,

based on four matched capillary tubes arranged in a manner analogous to a Wheatstone bridge, have been around for decades but have operational and performance shortfalls.

Carlo Dessy –

developer of the COMBO-ONE said “By eliminating the fundamental drawback of the traditional online viscometer design, the known ‘sample breakthrough’ after each measurement, our dual detector allows much more rapid sequencing of samples. The result of our design innovation is to increase the total daily throughput of a GPC/SEC System by a factor of two. An additional benefit of eliminating ‘sample breakthrough’ is a significant reduction of solvent required for each measurement and consequently the amount of waste produced.”

He added

“Another benefit of our COMBO-ONE detector is its high sensitivity and resolution. This is achieved as our differential refractometer is an integral part of the viscometer, therefore both concentration and viscosity are measured at the same time on the very same sample segment. When branching calculations and structure investigations are the goal of your GPC/SEC analysis, then resolution and sensitivity are the most important parameters users must optimize for useful results.”

TESTA ANALYTICAL SOLUTIONS e.K. • Sophienstraße 5 • 12203 Berlin

The COMBO-ONE Viscometer/DRI detector

from TESTA Analytical is fully compatible with all modern GPC/SEC systems. For further information please visit <https://www.testa-analytical.com/gpc-sec-chromatography.html> or contact Testa Analytical Solutions on +49-30-864-24076 / info@testa-analytical.com.

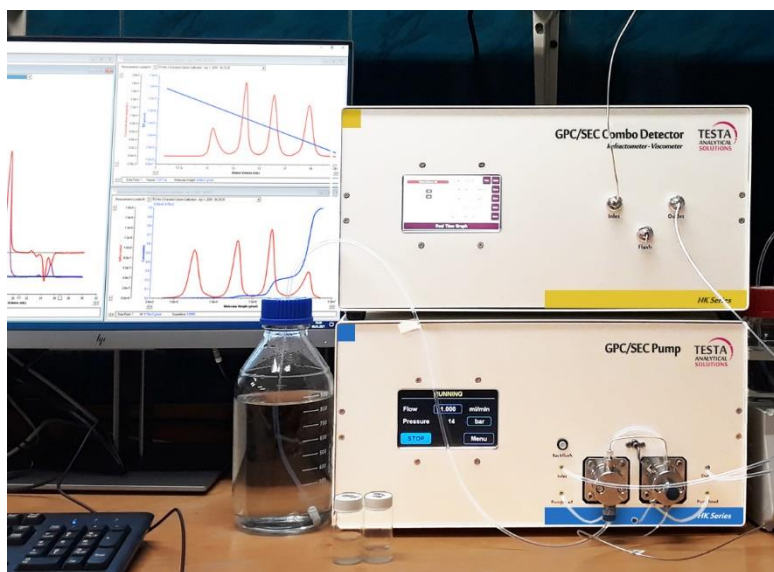


Image captions: COMBO-ONE Viscometer/DRI dual detector as a standalone unit and as part of a multi detector GPC/SEC system (courtesy: TESTA Analytical).

Testa Analytical Solutions e.K.

is a company dedicated to supplying the best possible instrumental solutions for characterization of polymers, particles, nanomaterials and proteins. Drawing upon over 30 years experience of technologies serving these markets, the staff at Testa Analytical are happy to share their knowledge with researchers worldwide to help provide them with a working solution for even the most demanding applications.

Worldwide HQ

Testa Analytical Solutions e.K.

Sophienstraße 5
12203 Berlin
Germany

Tel: +49-30-864-24076

Email: info@testa-analytical.com

Web www.testa-analytical.com

